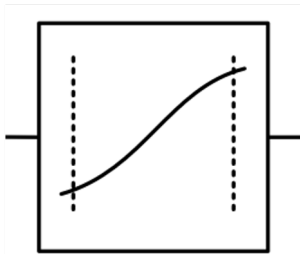
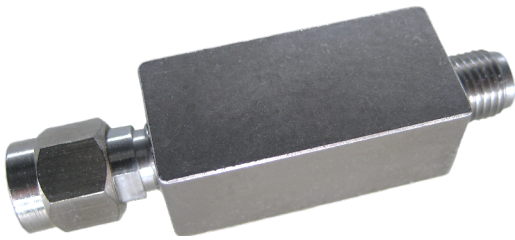


R. A. Wood Associates has developed many RF/microwave components to support our higher level assemblies. These have been designed, built, tested and integrated into our delivered products. Since most of our products support EW missions, the parts are inherently wideband, and can be used in wideband or narrowband applications

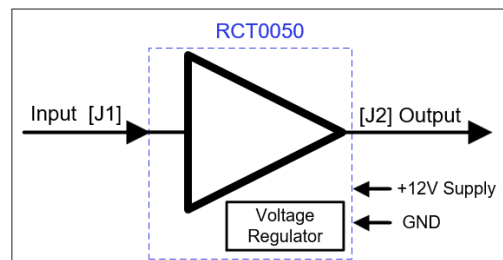
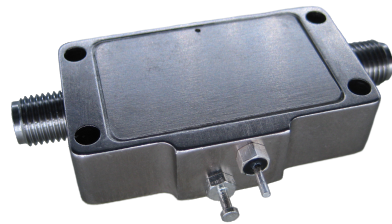
## RF/Microwave Equalizers



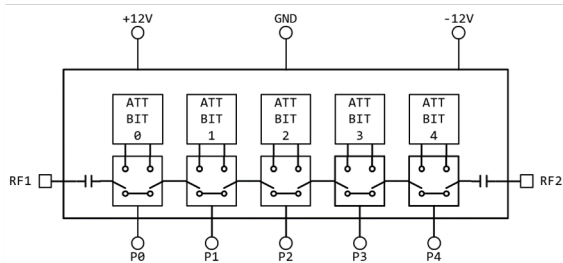
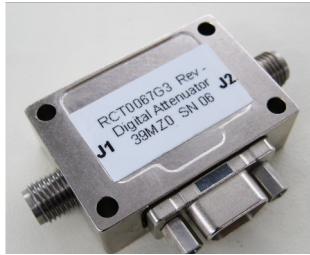
- Small form factor
- Positive slope to offset cable/amplifier roll off vs frequency
- Custom slopes and frequency ranges
- Low loss (typically < 1 dB)
- Up to 26 GHz upper frequency
- Negative slopes also available
- Over 320 designs and counting!

## RCT0050 Wideband Amplifier

- 0.5 -18 GHz wide frequency range
- High dynamic range part with flat gain
- < 4 dB noise figure, > 23 dBm Pout1dB at C and X Bands
- 18.5 dB Gain
- +12V, 215 mA typical



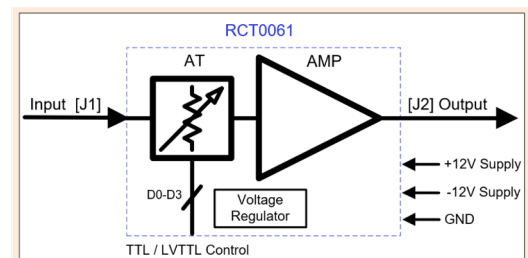
## RCT0067 Digital Attenuator



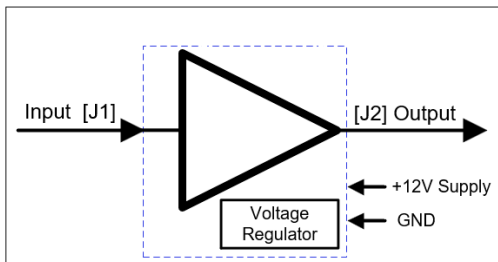
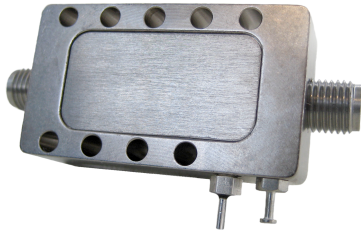
- 0.1 - 20 GHz frequency range
- 5 stage step attenuator
- 0-15 dB, 0.5 dB Step, or
- 0-31 dB, 1 dB Step
- High dynamic range > 22 dBm Pin1dB, 27 dBm max input power
- Uses MicroD connector to save space, +/-12V, TTL/LVDS control
- Great component for dynamic range/gain adjustments!

## RCT0061 Wideband Amp/Digital Attenuator

- 0.5 -18 GHz wide frequency range
- This part integrates our RCT0050 Wideband Amp and RCT0067 Digital Attenuator into 1 package
- Great component for system dynamic range and gain control
- +/-12V, 215 mA on 12V, TTL/LVDS control
- > 23 dBm Pout1dB At C and X Bands



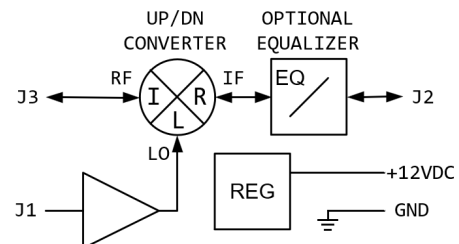
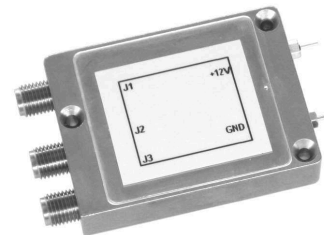
## RCT0075 HDR (High Dynamic Range) Gain Block



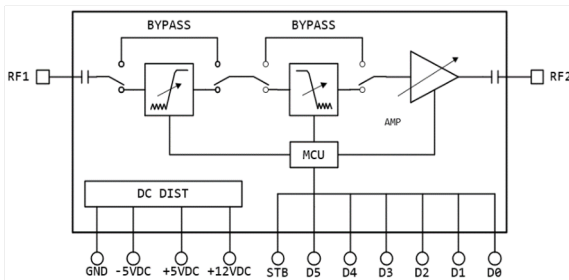
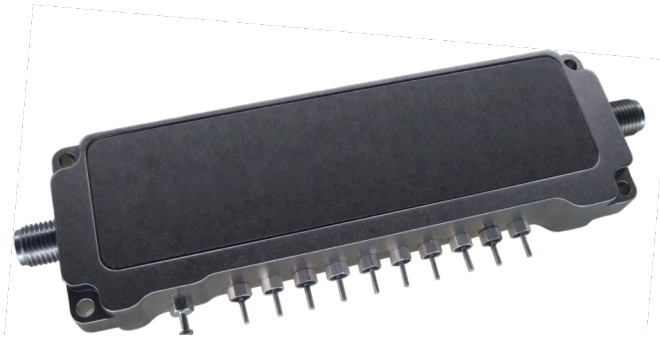
- 0.5 – 18 GHz frequency range
- A high dynamic range gain block with 11 dB typical gain, that can be used throughout a system to offset losses
- Pout 1dB typically > 19 dBm
- NF < 4.5 dB over C and X Bands
- +12V @ 230mA
- Multiple mounting configurations

## RCT0070 Mixer/LO Amp

- Wideband Up/Down Converter with built-in saturated LO amp
- High LO drive mixer (+20 dBm) provides high dynamic range and excellent spurious performance (Marki Microwave Mixer)
- RF Input: 5 – 20 GHz
- LO Input: 5 – 20 GHz, -6 to +3 dBm
- IF: DC – 4 GHz
- Pin1dB > +14 dBm



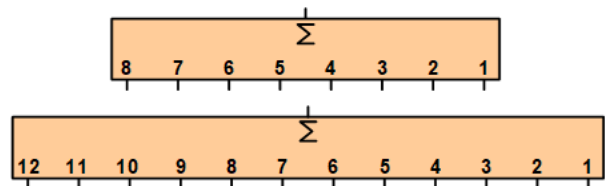
## RCT0080 EW CFM (Configurable Filter Module)



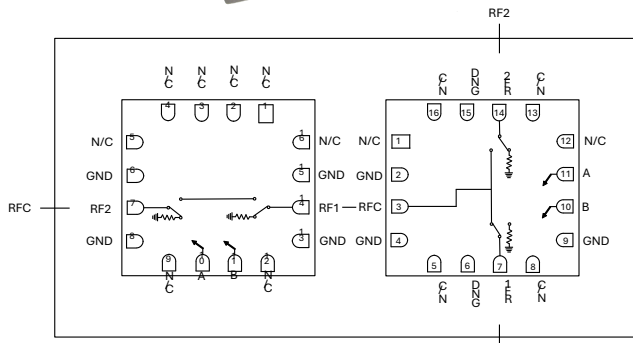
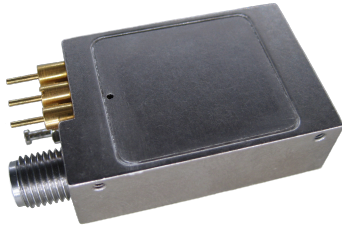
- 2 – 18 GHz configurable filter using surface mount technology
- Two filters in series can be configured for low pass, high pass, or band pass
- 2 Amplifiers between stages to offset filter losses
- 15.5 dB output digital attenuator for amplitude control/equalization
- Up to 64 filters can be stored

## Wideband Power Dividers, 8 Way and 12 Way

- 8-Way and 12-Way power dividers covering wide bandwidths
  - 0.5 – 2 GHz
  - 2 – 18 GHz
  - 2 – 12.5 GHz
  - 8 – 18 GHz
  - 4 – 18 GHz
- Smallest designs in the industry
- Options for SMP or SMA connectors



## SP2T Wideband Switches



- Frequency 0.1 – 18 GHz
- 2 surface mount switches in series for high isolation
- Internal terminations on all ports
- 60-70 dB isolation
- 20 nSec switch time
- > 23 dBm Pin1dB
- Option for SMA or SMP blind mate connectors

## Extreme BW RF Amplifiers

- Ultra WB Frequency coverage from 5 kHz to 3 GHz
- Custom input slopes (0 - 7 dB)
- Resistive power divider for 2 outputs, or bypass for single output
- Pout1dB > 20 dBm
- NF < 5 dB
- 12 - 24 VDC @ 100 mA

